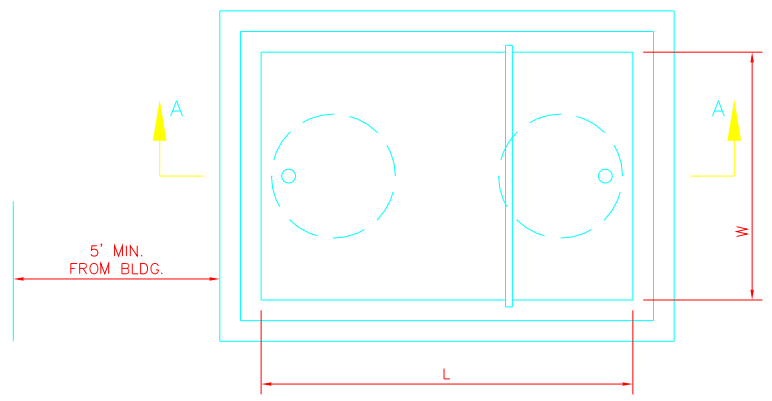
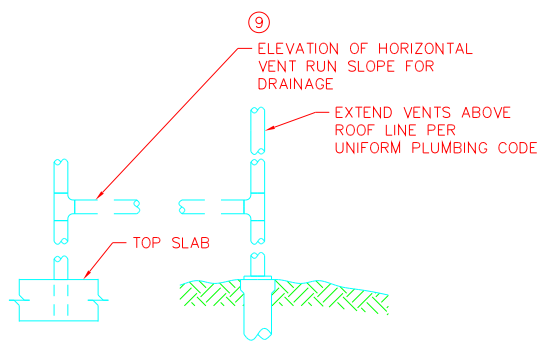
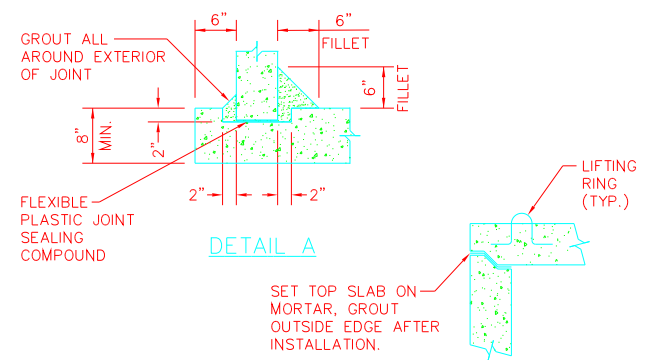


SECTION "A-A"



PLAN

| RATED CAPACITY | L | W | A | B | C | D | E |
|----------------|------|-----|-----|-----|-----|-----|-----|
| 300 GALLON | 72" | 48" | 48" | 24" | 21" | 14" | 7" |
| 750 GALLON | 96" | 48" | 64" | 32" | 38" | 25" | 13" |
| 1000 GALLON | 108" | 72" | 72" | 36" | 30" | 20" | 10" |
| 1500 GALLON | 120" | 72" | 80" | 40" | 40" | 27" | 13" |



DETAIL B

DETAIL C

VENT "A" MAY RISE A MINIMUM OF 42" ABOVE FIXTURE FLOOD LINE AND MAY COMBINE WITH VENT "B" ABOVE THE 42" LINE TO FORM A SINGLE VENT THROUGH THE ROOF.

SOUTHGATE
Water & Sanitation Districts
3722 EAST ORCHARD ROAD
LITTLETON, CO 80121
(303) 779-0261
FAX (303) 779-0220

OIL & SAND INTERCEPTOR
DETAIL